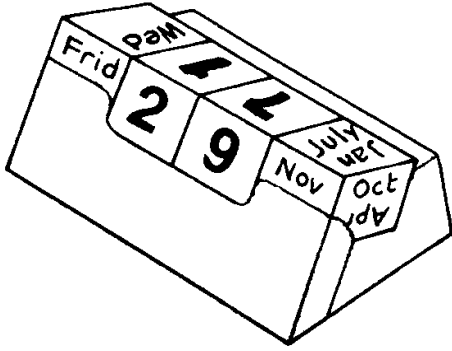


Calendar Cubes

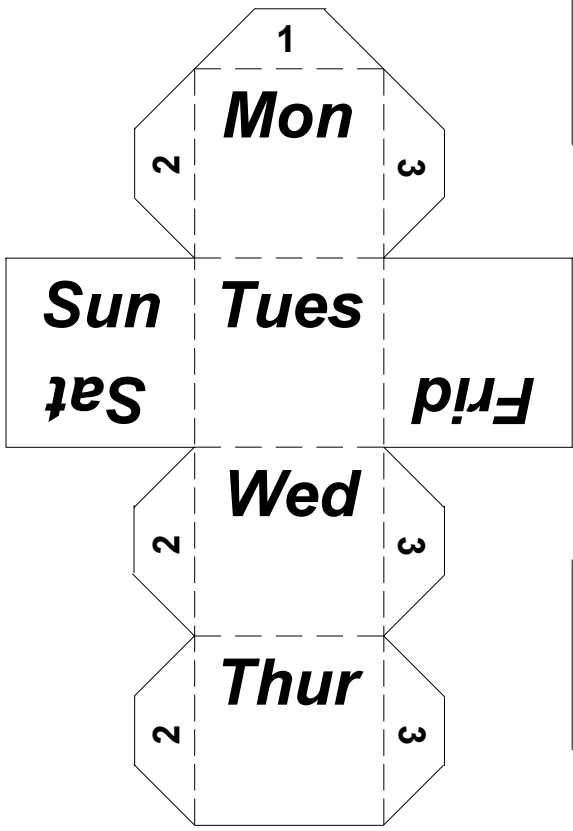
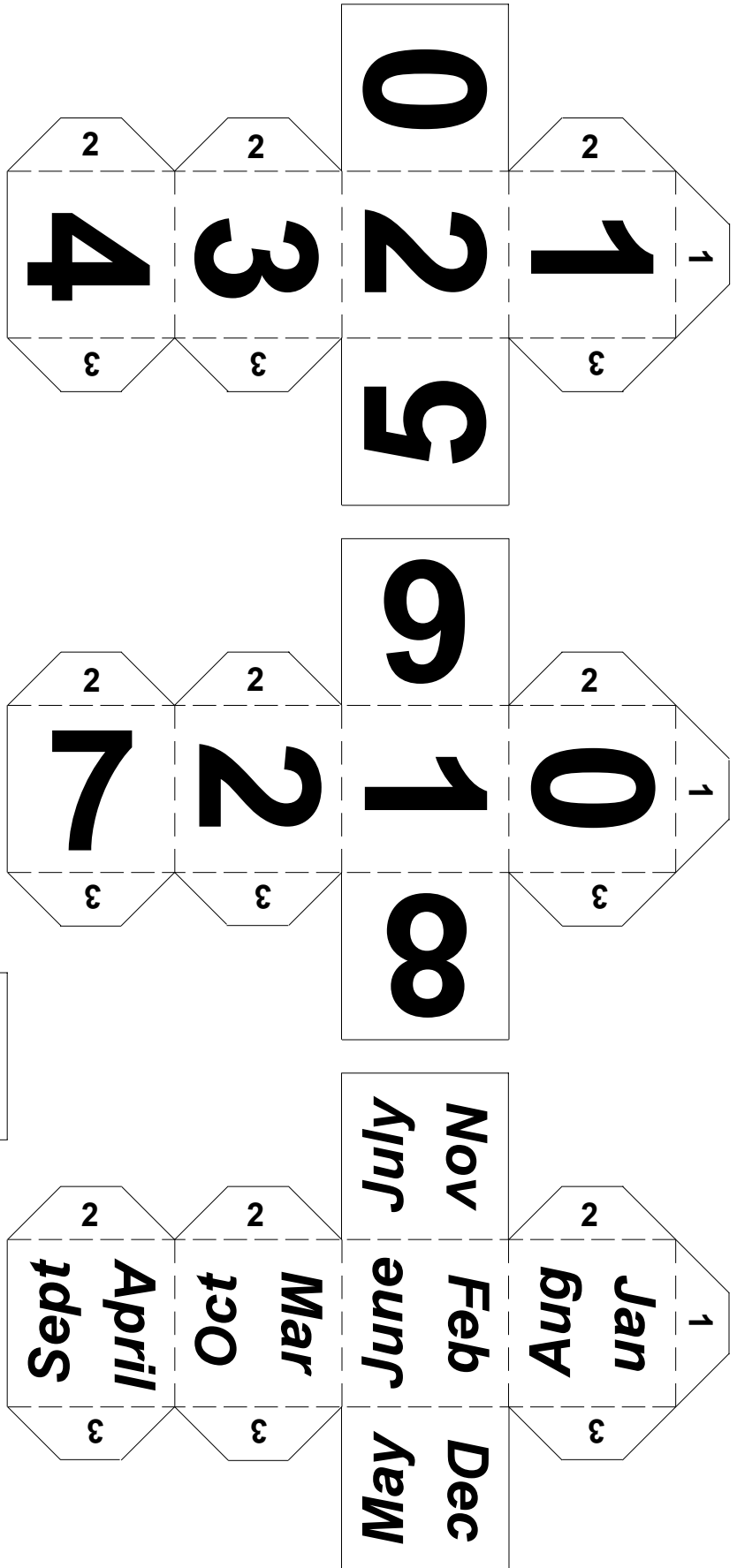


The four cubes which can be made from the nets printed here can be used to show any day, date and month of the year.

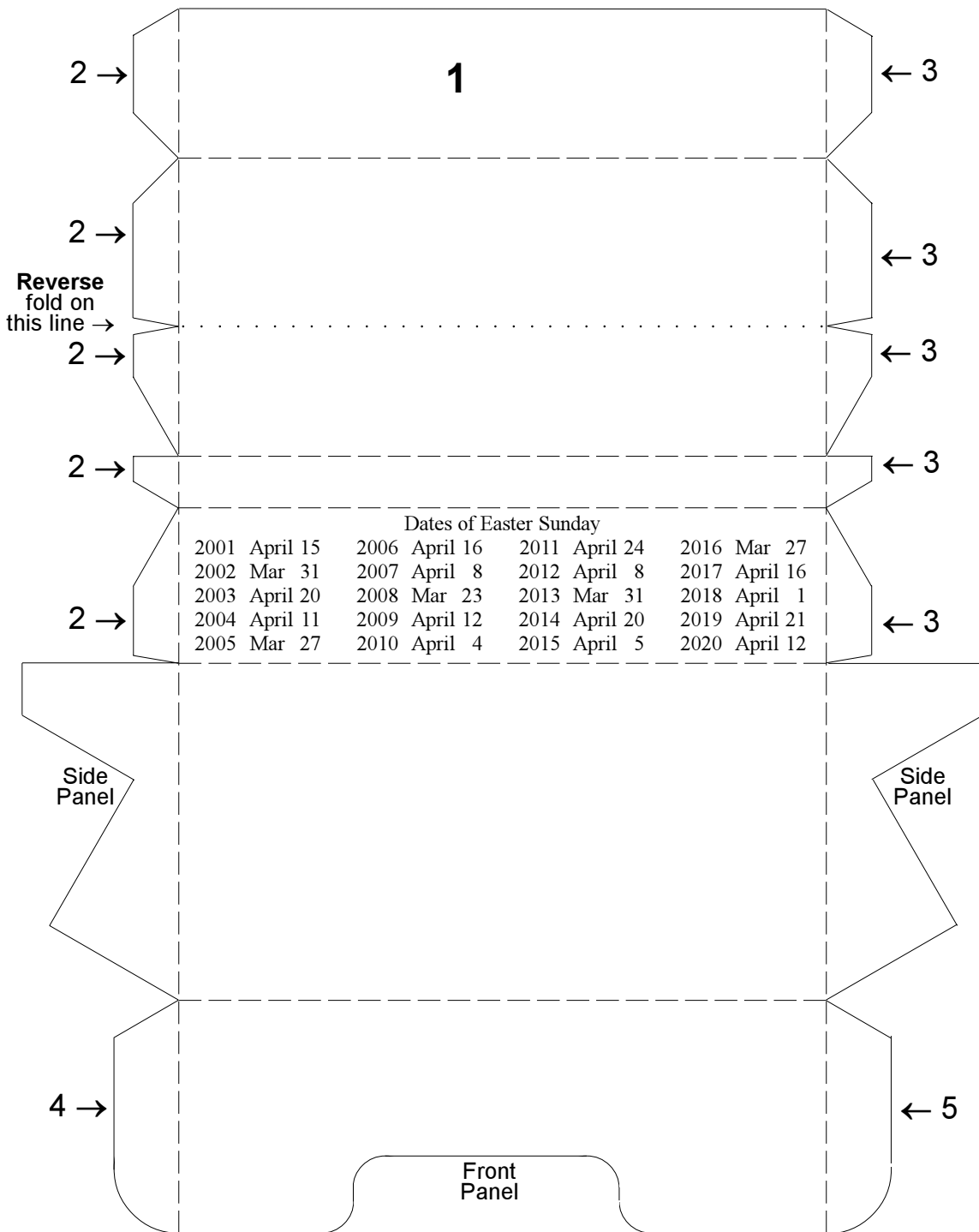
To make

Cut out along all the 'solid' lines.
Score and crease along the 'broken' lines.
Fold each one up into position (without glue) so as to make sure it is 'ready'.
Glue the tabs in the order they are numbered. Where several tabs have the same number glue them all at the same time.
Make sure numbers and words appear on the outside of each of the cubes!

After making the cubes, make a stand to display them



Stand for Calendar Cubes



Note where tabs 2, 3, 4 and 5 are shown by arrows. They are not marked on the tabs themselves since they might otherwise show on the finished stand.

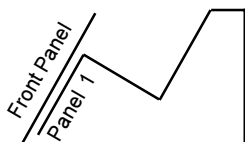
To make

Cut out along all the 'solid' lines. Score and crease all the 'broken' lines.

Lines broken into dashes all fold the **same** way, so that all printed matter appears on the 'outside'.

The single dotted line is folded the opposite way to all the others.

It should then be possible to fold the net around like this -



When certain of the shape being made -

- Glue the Front Panel to Panel 1
- Glue one side to all tabs 2
- Glue other side to all tabs 3

Tabs can be glued on the outside or inside of the side panels. It is much easier to glue them on the outside, but a smoother look is produced if they are glued to the inside.

- Fold and glue tab 4
- Fold and glue tab 5

A drawing of the stand with a set of Calendar Cubes in place is shown below.

