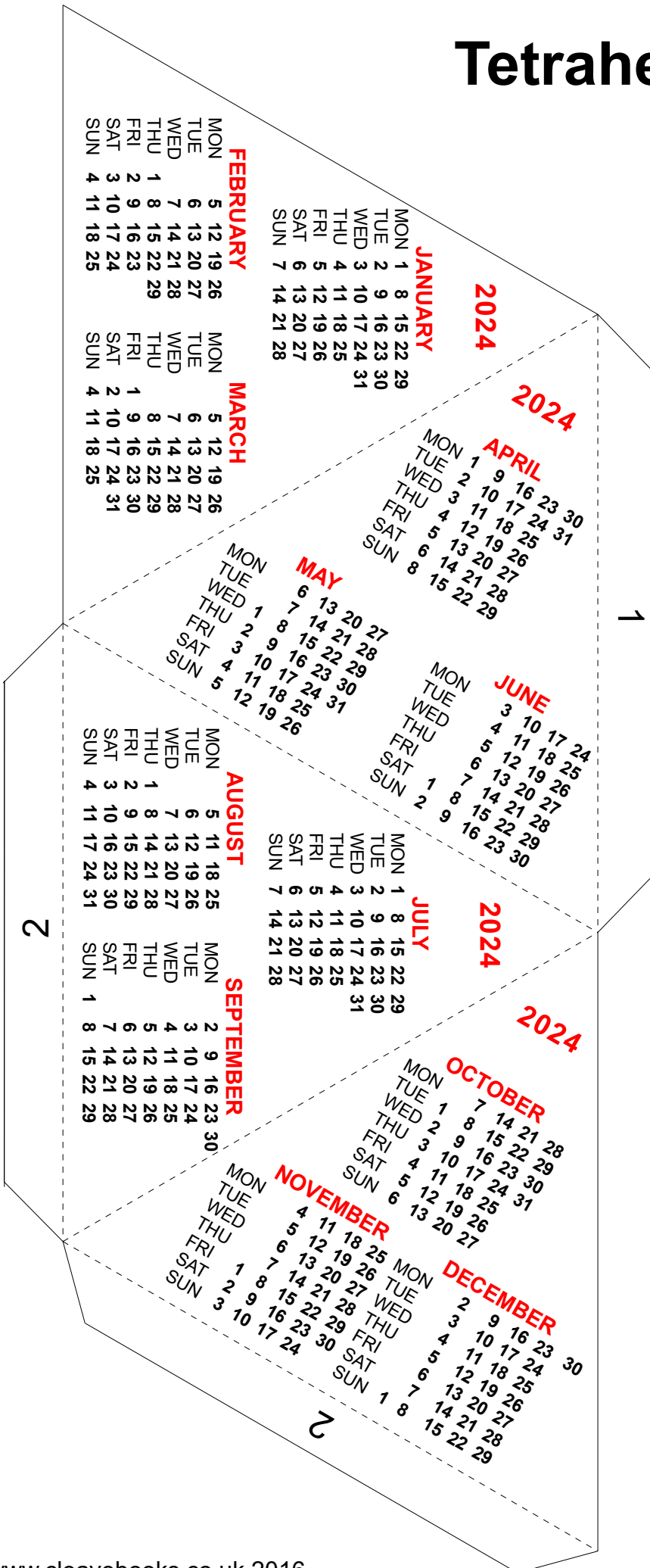


# Tetrahedron 2024

A **tetrahedron** is polyhedron having 4 faces. If each face is an equilateral triangle, as it is in this model, then it is known as a **regular tetrahedron**.



## To make

Cut out along all the 'solid' lines.  
Score and crease along the 'broken' lines.  
Fold it up into position (without glue) so as to get an idea of how it will look.  
Glue the tabs in the order they are numbered.