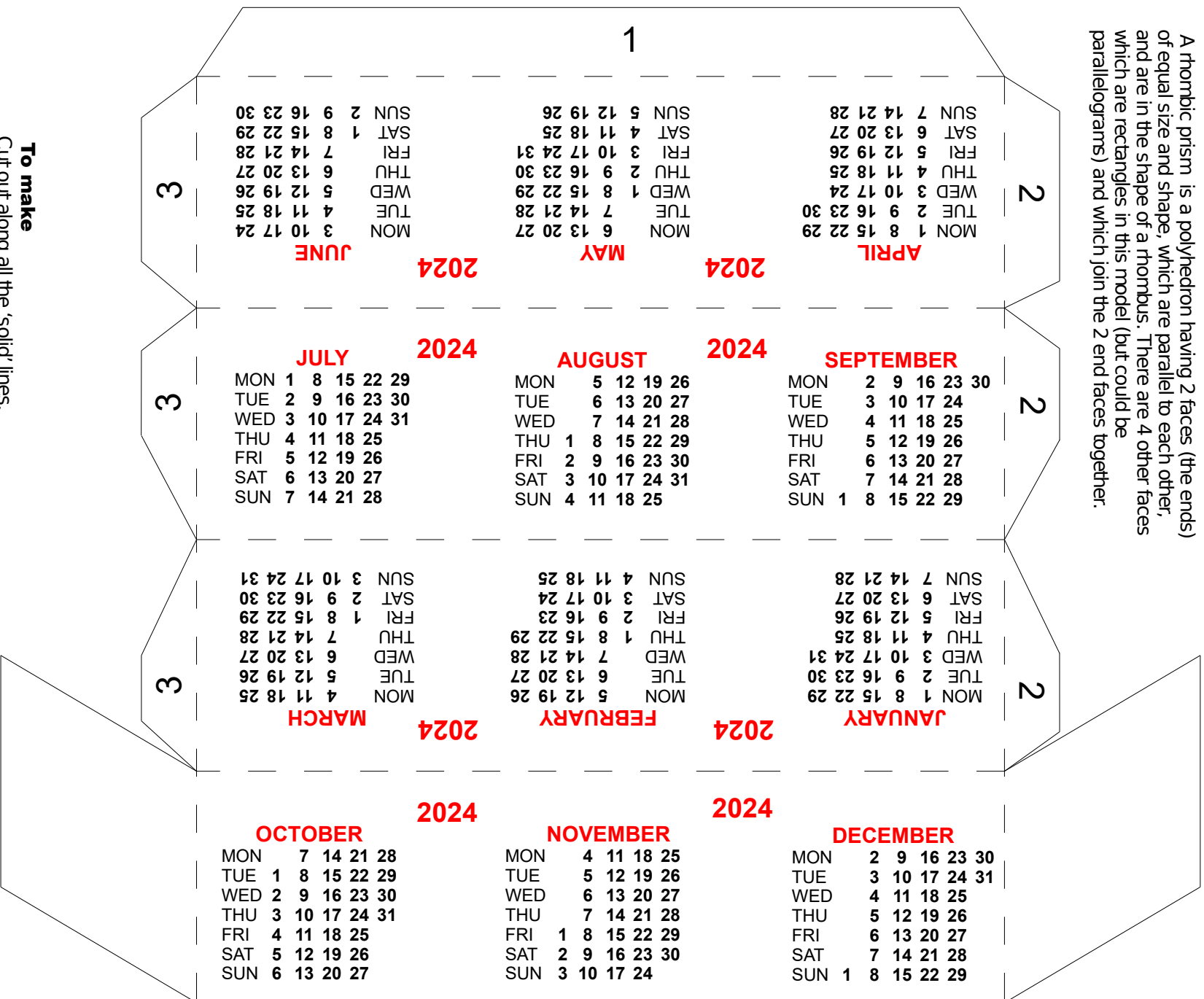


# Rhombic Prism 2024

A rhombic prism is a polyhedron having 2 faces (the ends) of equal size and shape, which are parallel to each other, and are in the shape of a rhombus. There are 4 other faces which are rectangles in this model (but could be parallelograms) and which join the 2 end faces together.



### To make

Cut out along all the 'solid' lines.  
 Score and fold along the 'broken' lines.  
 Fold it up into position (without glue) so as to get an idea of how it will look.  
 Glue the tabs in the order they are numbered.  
 Make sure the calendar appears on the outside of the shape being made