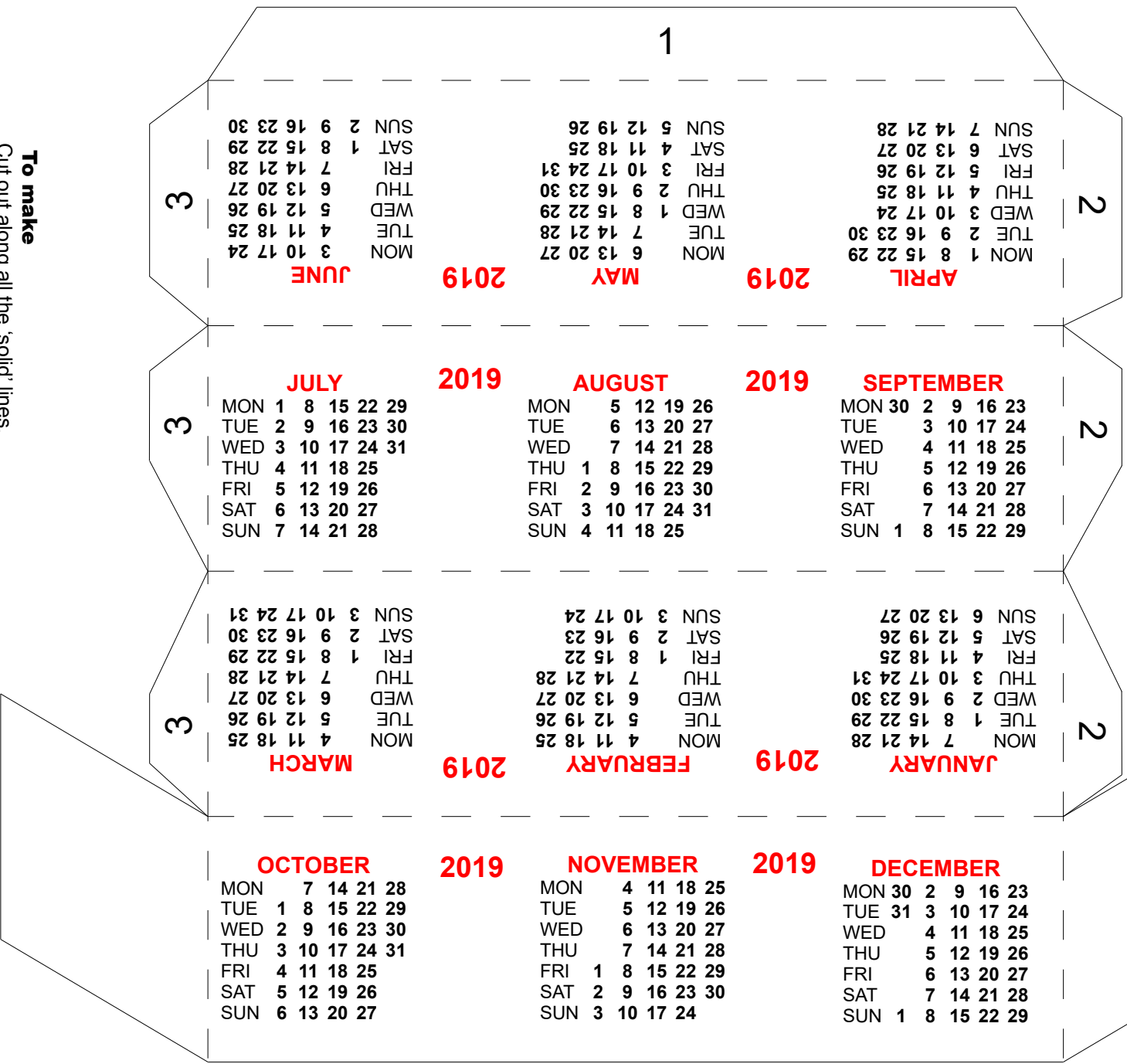


# Rhombic Prism 2019

A rhombic prism is a polyhedron having 2 faces (the ends) of equal size and shape, which are parallel to each other, and are in the shape of a rhombus. There are 4 other faces which are rectangles in this model (but could be parallelograms) and which join the 2 end faces together.



## To make

- Cut out along all the 'solid' lines.
- Score and fold along the 'broken' lines.
- Fold it up into position (without glue) so as to get an idea of how it will look.
- Glue the tabs in the order they are numbered.
- Make sure the calendar appears on the outside of the shape being made