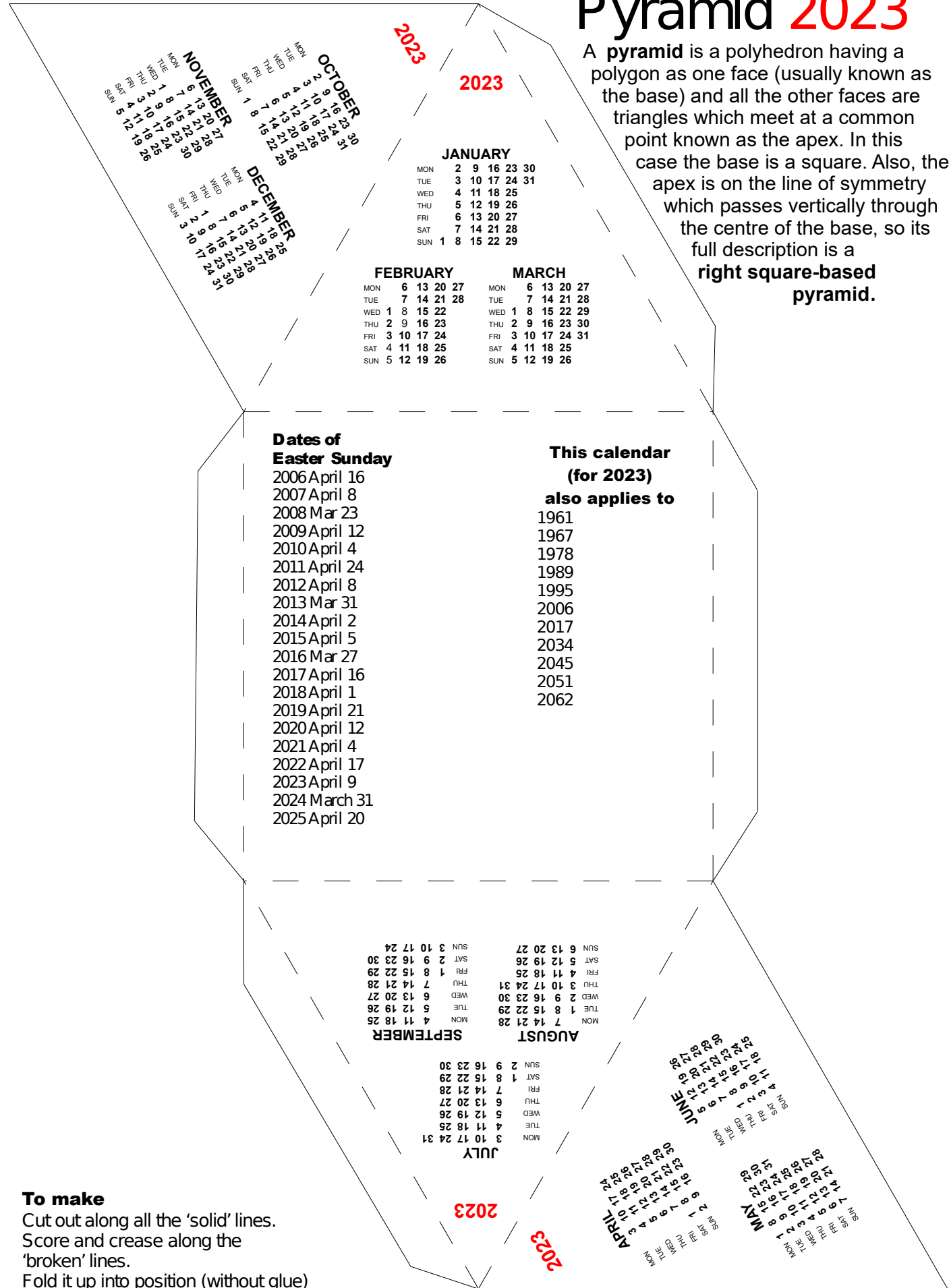


# Pyramid 2023

A **pyramid** is a polyhedron having a polygon as one face (usually known as the base) and all the other faces are triangles which meet at a common point known as the apex. In this case the base is a square. Also, the apex is on the line of symmetry which passes vertically through the centre of the base, so its full description is a **right square-based pyramid**.



## To make

Cut out along all the 'solid' lines.  
 Score and crease along the 'broken' lines.  
 Fold it up into position (without glue) so as to get an idea of how it will look.  
 Glue the tabs in the order they are numbered.