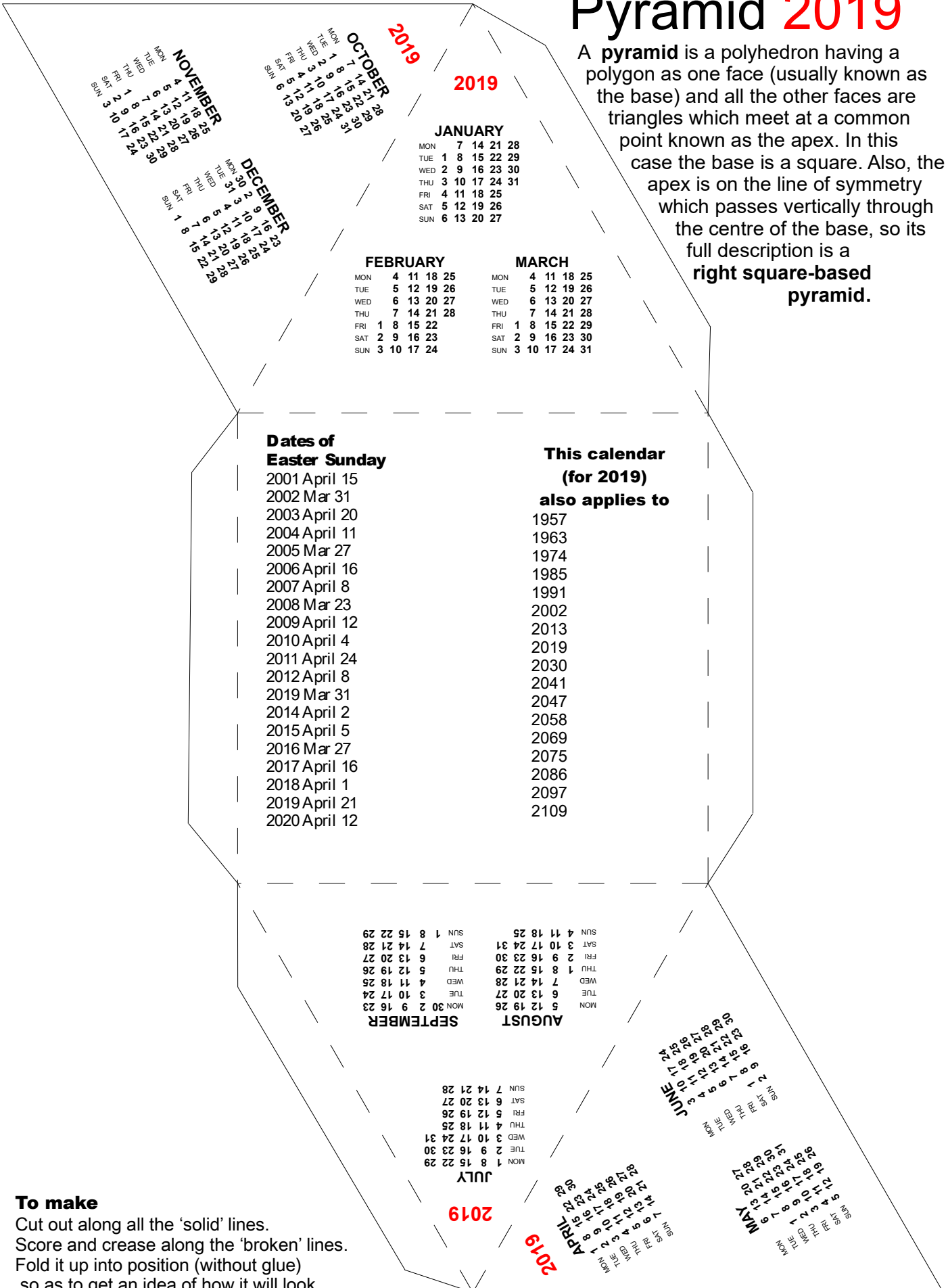


Pyramid 2019

A **pyramid** is a polyhedron having a polygon as one face (usually known as the base) and all the other faces are triangles which meet at a common point known as the apex. In this case the base is a square. Also, the apex is on the line of symmetry which passes vertically through the centre of the base, so its full description is a **right square-based pyramid**.



Dates of Easter Sunday

- 2001 April 15
- 2002 Mar 31
- 2003 April 20
- 2004 April 11
- 2005 Mar 27
- 2006 April 16
- 2007 April 8
- 2008 Mar 23
- 2009 April 12
- 2010 April 4
- 2011 April 24
- 2012 April 8
- 2019 Mar 31
- 2014 April 2
- 2015 April 5
- 2016 Mar 27
- 2017 April 16
- 2018 April 1
- 2019 April 21
- 2020 April 12

This calendar (for 2019) also applies to

- 1957
- 1963
- 1974
- 1985
- 1991
- 2002
- 2013
- 2019
- 2030
- 2041
- 2047
- 2058
- 2069
- 2075
- 2086
- 2097
- 2109

To make

- Cut out along all the 'solid' lines.
- Score and crease along the 'broken' lines.
- Fold it up into position (without glue) so as to get an idea of how it will look.
- Glue the tabs in the order they are numbered.