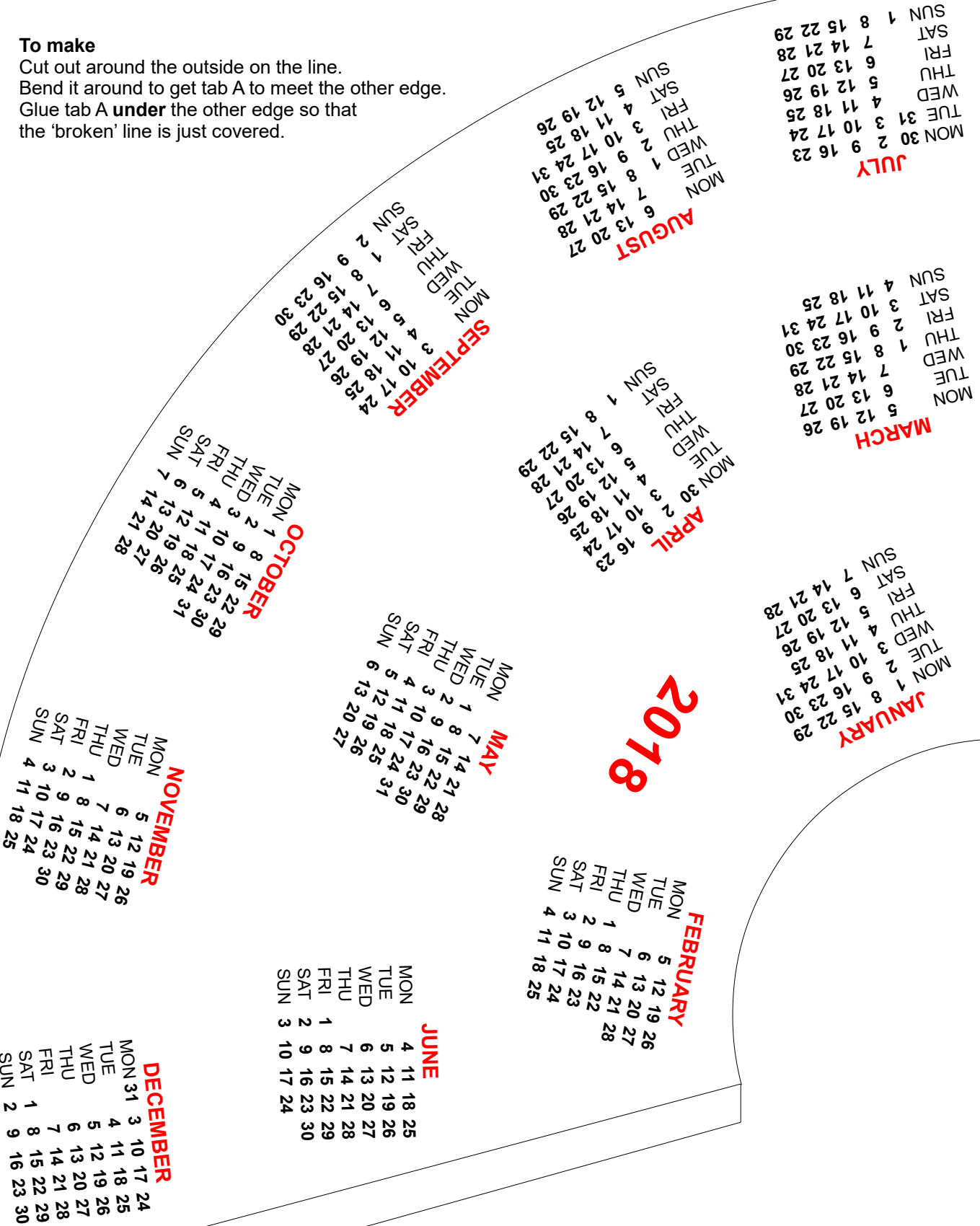


Cone 2018

To make

Cut out around the outside on the line.
 Bend it around to get tab A to meet the other edge.
 Glue tab A **under** the other edge so that the 'broken' line is just covered.



Note that this is not a proper cone since it does not come to a sharp point (the apex). The top has been cut off so that it is simpler to make and also to handle when it is in use.

More correctly it is a **truncated cone**.